



Whether quartz stone or ceramic design – worktops by systemo® perfectly combine nature, elegance and durability. Both materials are not only extremely robust, acidresistant and food safe, but thanks to their nonporous surfaces they are also very hygienic and easy to maintain. Available in many different thicknesses and finishes.



Q1120
Concrete dark
imitation



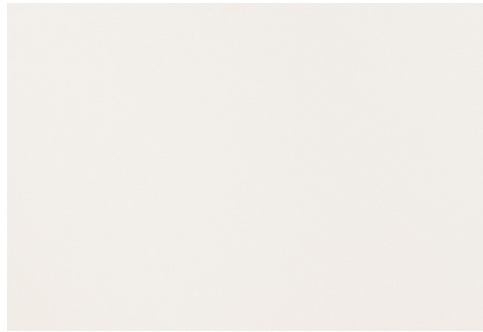
Q1140
Marble cream
imitation



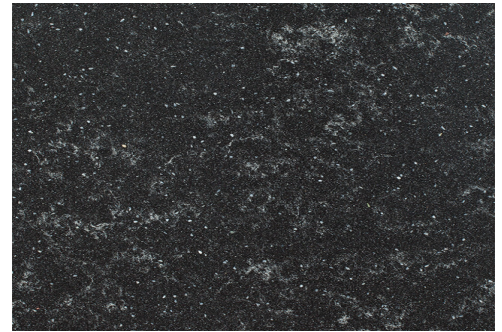
Q1160
Truffle brown



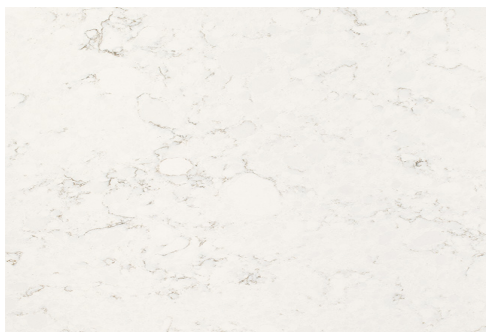
Q1170
Vesuvius black



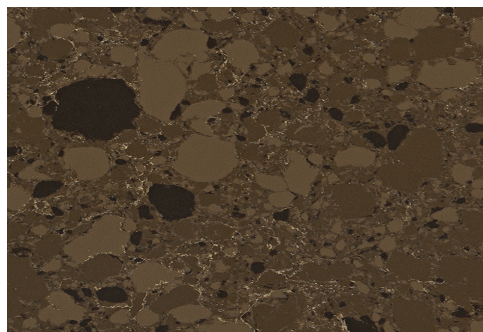
Q1180
Alpine white



Q1220
Marble anthracite
imitation



Q1230
Marble victoria white
imitation



NEW! Q1710
Tivoli brown



C2040
Lava black



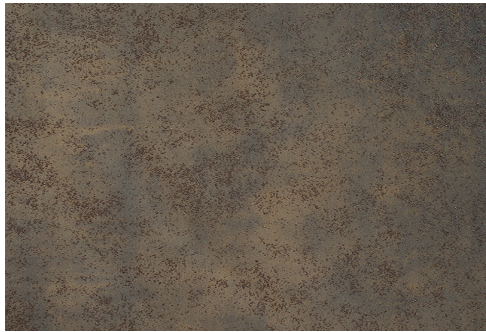
C2050
Graphite



C2060
Basalt grey



C2070
Concrete brown
imitation



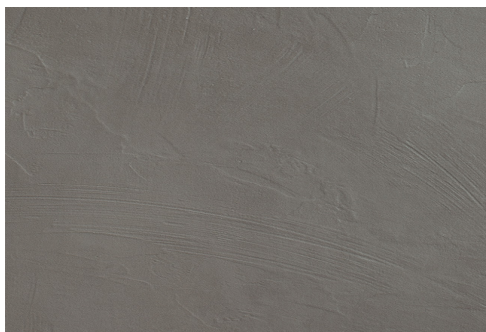
C2080
Iron glimmer



C2090
Silicio graphite



C2110
Silicio truffle



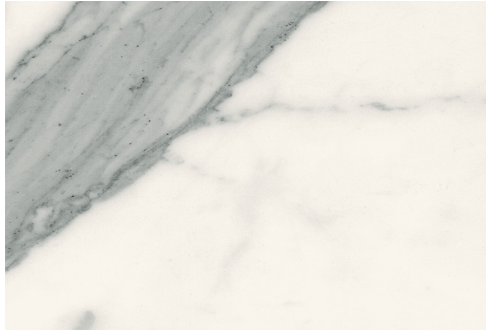
C2130
Ebano grey



C2140
Ebano light grey



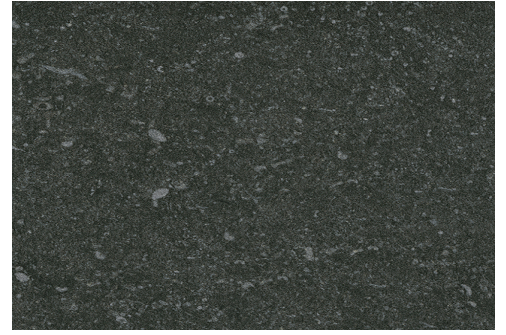
C2150
Concrete brown
imitation



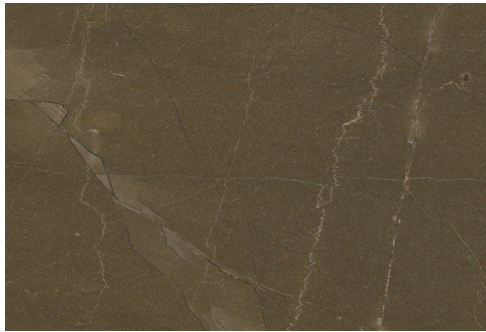
C2160
Marble Carrara
imitation



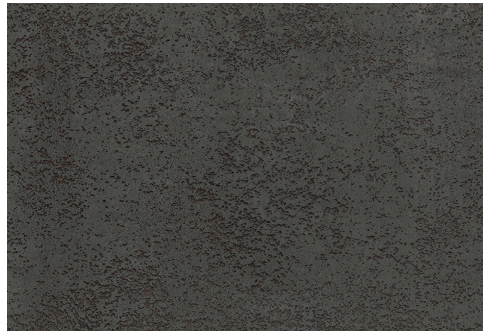
C2230
Travertine high gloss
imitation



NEW! C2710
Lazio blue



NEW! C2720
Marble amalfi
effect



NEW! C2730
Iron glimmer grey



NEW! C2740
Basaltino white